

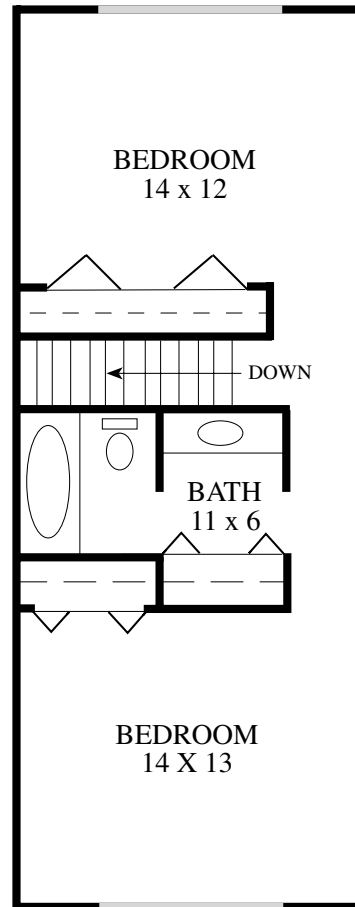


WELCOME TO  
**Marshview  
 Townhomes**

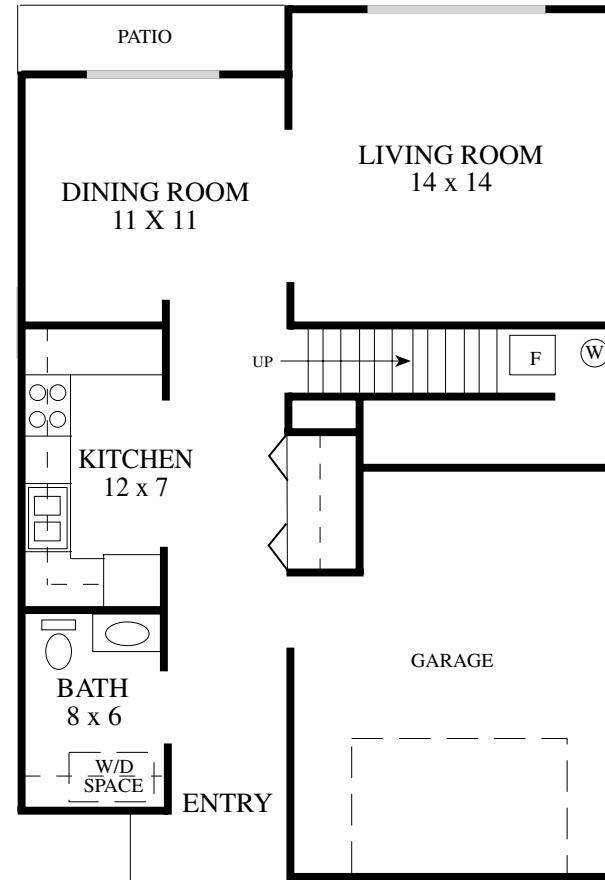


Now you can enjoy quality housing at an affordable price. Two and three bedroom townhomes, and a specially designed four bedroom handicapped home.

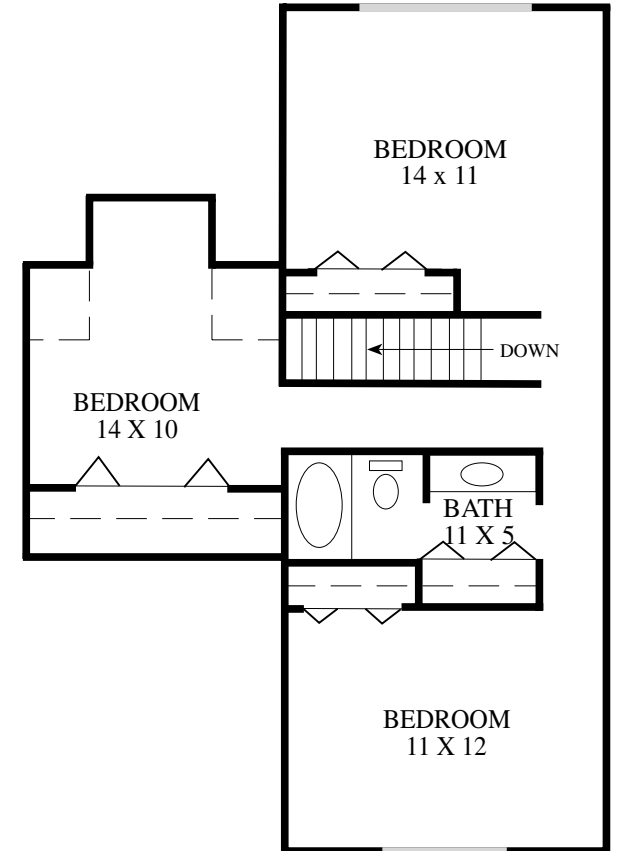
- ❖ Two Story Townhomes
- ❖ Private Entry
- ❖ Attached Garage
- ❖ Large Kitchen with Dishwasher
- ❖ 1-1/2 baths
- ❖ Forced Air Furnace
- ❖ Central Air Conditioning
- ❖ Great Closet Space
- ❖ Childrens Playground
- ❖ Walking Distance to Shopping



2 BR TOWNHOME  
 2ND FLOOR PLAN



2 BR TOWNHOME - 1,136 Sq. Ft.  
 3 BR TOWNHOME - 1,320 Sq. Ft.  
 1ST FLOOR PLAN



3 BR TOWNHOME  
 2ND FLOOR PLAN

## Marshview Townhomes

offer a variety of amenities, including:

---

Private Entry

•

Atrium Door to Patio Area

•

Attached Garage

•

Laundry Hook-ups

•

Childrens Playground

•

Well Lit Off-Street Parking

•

Convenient to Shopping

•

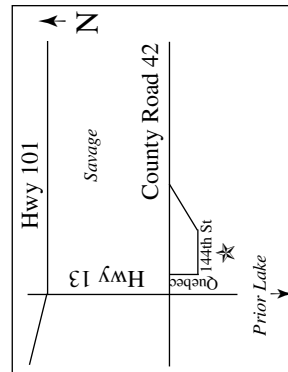
Limited Bus Service to Downtown Mpls.

---

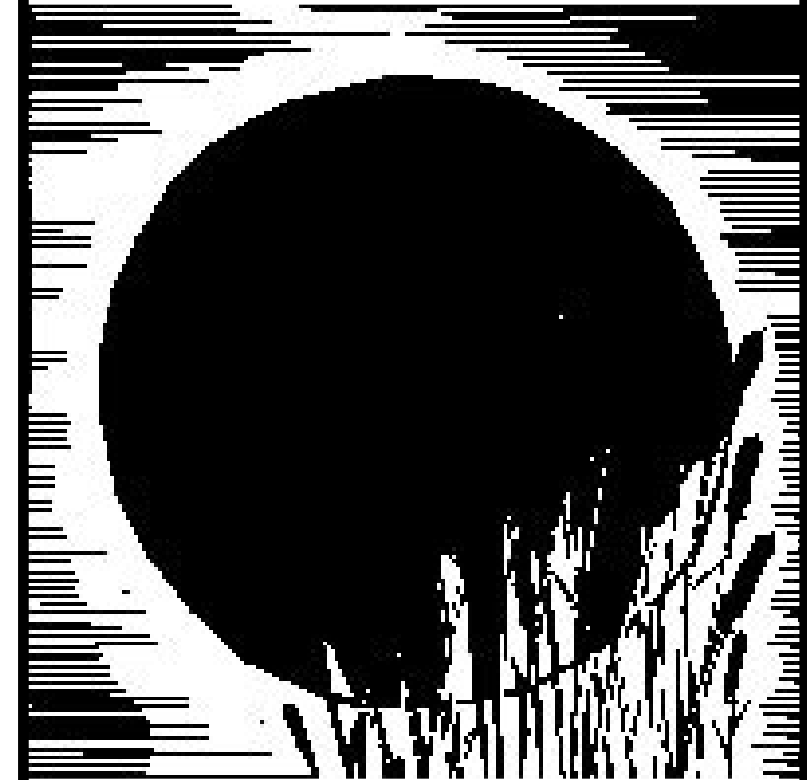
### Quality Housing / Affordable Rent

Special Rental Community Programs require income certification to qualify for our low rental rates.

Marshview Townhomes  
7401 West 144th Street  
Savage, MN 55378



MARSHVIEW  
TOWNHOMES



952/ 447-7100

7401 WEST 144TH STREET  
SAVAGE, MINNESOTA 55378

Professionally Managed by Evergreen Real Estate Development Corporation